



## At A Glance

### Project:

Dredging Works at for Jetty 01-09 for Pegaga Jacket, Pegaga CPP Topside and Kg-Dwn 98/2 Project at Sapura Fabrication Sdn Bhd, Lumut Yard

### Client:

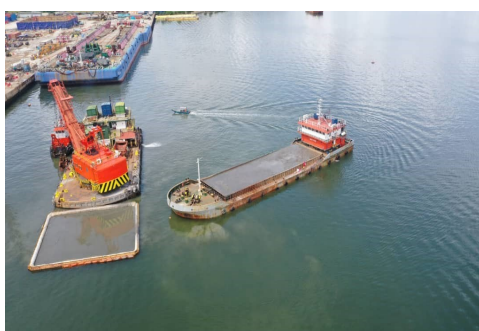
Sapura Fabrication Sdn Bhd

### Contract Sum:

RM 2,100,576.00

### Contract Period:

24.11.2020—27.01.2021



## P113 : Dredging Works for Sapura Project at Lumut.

### Dredging Works

Dredging is proposed at the Sapura Fabrication Yard to facilitate the load out of Central Processing Platform (CPP) topside and jacket of the Pegaga Development Project. The purpose of this dredging activity is to deepen the shoreline in order to facilitate the loadout of the Central Processing Platform (CPP) topside and jacket from the fabrication yard. The current depth of -6mCD is insufficient to allow for the loadout vessel to berth.

### Design Parameters:

Design Depth : -8.5mCD until -9.5mCD

Disposal Location Distance : 17 nautical miles

Dredge Quantity : 99,000 m<sup>3</sup> (Provisional)

### Vessel Deployed:

No.	Equipment	Capacity	Quantity
1	Grab Dredger	13m <sup>3</sup>	1
2	Non-propelled Split Hopper Barge	1,000m <sup>3</sup>	2
3	Self-propelled Split Hopper Barge	1,000m <sup>3</sup>	1
4	Tug Boat	1,000bhp & 1,200bhp	2
5	Anchor Handling Tug	5T	1

